

Features

Standard Equipment

- Linde twin pedals system
- Linde joystick integrated in armrest
- 2x4KW maintenace-free AC drive motors
- 180 degree battery door for vertical/lateral battery change
- Linde Curve Assist
- Adjustable PVC seat, adapts to operator’s body size and weight
- Multifunction LCD display
- Battery capacity 48V/575-700 Ah
- LED rear lamp
- SE tyres
- Standard mast lift height h3 = 3250 mm
- Fork length l = 1,000mm
- ISO 3691
- Standard truck lightning
- Adjustable steering coloumn

Optional Equipment

- Single drive pedal with direction lever in armrest
- Alternative fork lengths
- Alternative fork carriage widths
- Triplex masts, lift height to 6220 mm
- Integrated sideshift
- One, two additional hydraulic circuits for attachments
- Fork extensions
- Load backrest
- Full cab with doors
- Front and rear screens, wipers and tops screen
- Comfortable seat
- Blue Spot
- Individual colour

Other Options Available on Request



Electric Counterbalanced Trucks  
Capacity 1600, 2000kg  
E16, E20

Series 1275



Safety

Outstanding stability and excellent traction achieved by a design that incorporates a high-level engineering expertise and high-quality materials. The advanced drive axle concept provides benchmarking truck driving experience by automatically moving forward when the mast is tilted back.

Performance

Very well known as electric trucks with IC truck performance, Linde electric trucks are delivered with powerful electric motors and an intelligent electronic control. These both together form an impressive and compact powerpack to deliver a benchmarking productivity.

Comfort

A consistently high level of efficiency for extended working periods is only possible with ergonomic design. The ergonomic layout of all truck controls, an adjustable armrest with integrated mini levers, and the twin pedal layout provides the optimum interface between the truck and it’s operator.

Reliability

Fully sealed aluminium component housings provide a superb protection from dust and dirt ingress. European manufactured cutting edge drive and lift motors and contact free hydraulic mini levers underline the premium standard of this electric truck.

Service

Four different battery changing solutions, maintenance free AC motors and wet disc brakes are bringing the truck down time to a minimum to ensure the lowest service cost level possible. Easy and quick diagnosis are realised through the Linde digital control system.

Features

Linde operator compartment

- Ergonomic design for efficient and fatigue-free working
- Spacious compartment with comfortable footwell and adjustable seat
- Small diameter steering wheel
- Adjustable steering column
- Various storage compartments



Adaptive drive axle

- Moving front axle
- Enhanced stability for distance travel
- Increase maneuverability in confinded areas



Linde Twin Pedals System

- Quick change of forward/reverse direction without changing feet on pedals
- Increased productivity
- Fatigue-free working



Linde Joystick System

- Safe & accurate load handling
- Effortless fingertip control of all mast functions
- Hydraulic control levers integrated in armrest
- Wide and cushioned armrest

Flexible battery change solutions

- Standard 180° battery door for vertical and lateral battery change
- Flexible battery change solutions for different applications and customer needs
- Quick battery change to reduce the down time

Safe operation

- Patented high pivoting Linde steering axle
- Outstanding residual capacity
- Large step in plate with anti slip design



Linde clear-view mast

- Superb visibility through slim-profile sections of mast
- Full load capacity up to maximum lift height
- Exceptional residual capacity

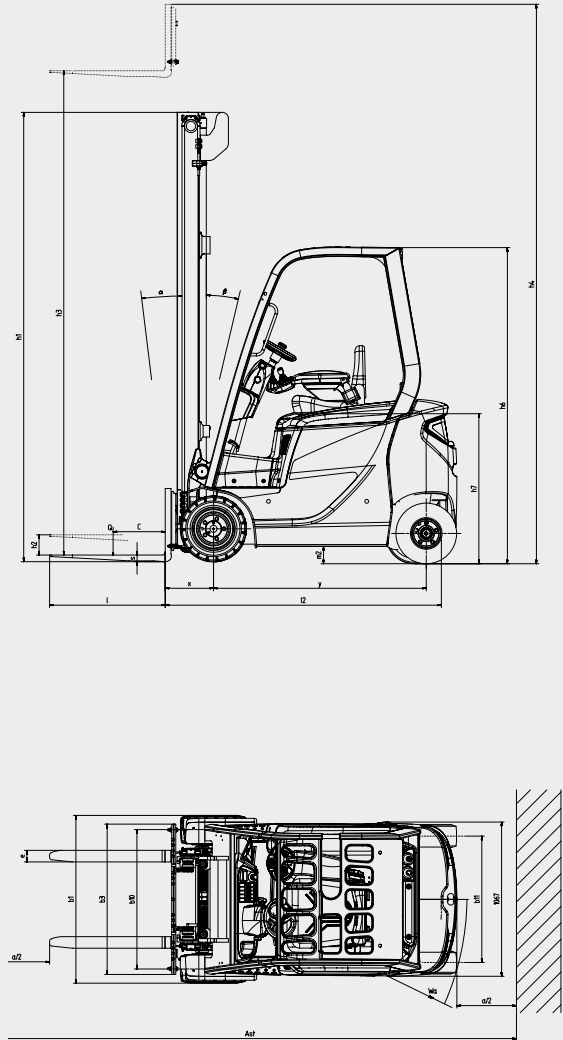


\*Subject to modification in the interests of progress, illustration and technical details not binding for actual constructions and may show the optional equipments.\*

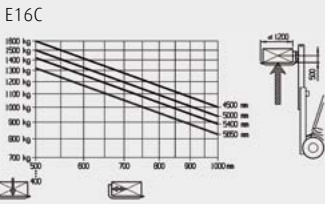
Technical Data

|                 |   |   |           |                         |                         |                         |                         |                         |
|-----------------|---|---|-----------|-------------------------|-------------------------|-------------------------|-------------------------|-------------------------|
| Characteristics | 1.1   | Manufacturer  |           | Linde                   | Linde                   | Linde                   | Linde                   | Linde                   |
|                 | 1.2   | Model designation   |           | E16C                    | E16CH                   | E16P                    | E16PH                   | E20PH                   |
|                 | 1.3   | Power unit:Electromotion,diesel,gasoline,LPG, mains power     |           | Electric                | Electric                | Electric                | Electric                | Electric                |
|                 | 1.4   | Operation: manual, pedestrain, stand-on, seated, order picker |           | Driver seated           | Driver seated           | Driver seated           | Driver seated           | Driver seated           |
|                 | 1.5   | Load capacity   | Q(t)      | 1.6                     | 1.6                     | 1.6                     | 1.6                     | 2.0                     |
|                 | 1.6   | Load center   | c(mm)     | 500                     | 500                     | 500                     | 500                     | 500                     |
| Weights         | 1.8   | Axle centre to fork face                                      | x(mm)     | 335                     | 335                     | 335                     | 335                     | 339                     |
|                 | 1.9   | Wheelbase   | y(mm)     | 1356 <sup>2)</sup>      | 1383 <sup>2)</sup>      | 1442 <sup>2)</sup>      | 1472 <sup>2)</sup>      | 1472 <sup>2)</sup>      |
|                 | 2.1   | Service weight  | kg        | 3230                    | 3465                    | 3155                    | 3445                    | 3815                    |
| Tyres           | 2.2   | Axle load with load, front/rear                               | kg        | 4185/645 <sup>2)</sup>  | 4297/768 <sup>2)</sup>  | 4176/579 <sup>2)</sup>  | 4277/768 <sup>2)</sup>  | 4935/880 <sup>2)</sup>  |
|                 | 2.3   | Axle load without load, front/rear                            | kg        | 1585/1645 <sup>2)</sup> | 1715/1750 <sup>2)</sup> | 1640/1515 <sup>2)</sup> | 1755/1690 <sup>2)</sup> | 1755/2060 <sup>2)</sup> |
|                 | 3.1   | Tyre:SE=(super elastic),P=(pneumatic)                         |           | SE                      | SE                      | SE                      | SE                      | SE                      |
| Measurements    | 3.2   | Tyre size, front  |           | 18x7-8                  | 200/50-10               | 18x7-8                  | 18x7-8                  | 200/50-10               |
|                 | 3.3   | Tyre size, rear   |           | 15x4 1/2-8              | 15x4 1/2-8              | 16x6-8                  | 16x6-8                  | 16x6-8                  |
|                 | 3.5   | Wheels, number front/rear(X=driven)                           |           | 2X / 2                  | 2X / 2                  | 2X / 2                  | 2X / 2                  | 2X / 2                  |
| Measurements    | 4.1   | Mast tilt, forward/backward                                   | α / β (°) | 5.7/6.5                 | 5.7/6.5                 | 5.7/7.5                 | 5.7/7.5                 | 5.7/7.5                 |
|                 | 4.2   | Height of mast, lowered                                       | h1(mm)    | 2176                    | 2176                    | 2176                    | 2176                    | 2178                    |
|                 | 4.3   | Free lift   | h2(mm)    | 150                     | 150                     | 150                     | 150                     | 150                     |
|                 | 4.4   | Lift  | h3(mm)    | 3250                    | 3250                    | 3250                    | 3250                    | 3250                    |
|                 | 4.5   | height of mast, extended                                      | h4(mm)    | 3861                    | 3861                    | 3861                    | 3861                    | 3863                    |
|                 | 4.7   | Height of overhead guard (cabin)                              | h6(mm)    | 2018                    | 2176                    | 2018                    | 2173                    | 2173                    |
|                 | 4.8   | Height of seat platform                                       | h7(mm)    | 990                     | 1150                    | 990                     | 1150                    | 1150                    |
|                 | 4.12  | Tow coupling height   | h10(mm)   | 529                     | 614                     | 563                     | 644                     | 645                     |
|                 | 4.19  | Overall length  | l1(mm)    | 2880 <sup>2)</sup>      | 2908 <sup>2)</sup>      | 2983 <sup>2)</sup>      | 3018 <sup>2)</sup>      | 3060 <sup>2)</sup>      |
|                 | 4.20  | Length to fork face   | l2(mm)    | 1880 <sup>2)</sup>      | 1880 <sup>2)</sup>      | 1983 <sup>2)</sup>      | 2018 <sup>2)</sup>      | 2060 <sup>2)</sup>      |
|                 | 4.21  | Overall width   | b1/b2(mm) | 1083                    | 1158                    | 1083                    | 1158                    | 1158                    |
|                 | 4.22  | Fork dimensions,sxexl   | s/e/l(mm) | 45 x 100 x 1000         | 45 x 100 x 1000         | 45 x 100 x 1000         | 45 x 100 x 1000         | 45 x 100 x 1000         |
|                 | 4.23  | Fork carriage to Din 15173, class/form A,B                    |           | 2A                      | 2A                      | 2A                      | 2A                      | 2A                      |
|                 | 4.24  | Width of fork carriage  | b3 [mm]   | 1040                    | 1040                    | 1040                    | 1040                    | 1040                    |
|                 | 4.31  | Ground clearance, mast  | m1(mm)    | 95                      | 95                      | 90                      | 90                      | 90                      |
|                 | 4.32  | Ground clearance, center of wheelbase                         | m2(mm)    | 110                     | 110                     | 105                     | 105                     | 105                     |
|                 | 4.33  | Aisle width with pallet 1000x1200mm across forks              | Ast(mm)   | 3209 <sup>2)</sup>      | 3433 <sup>2)</sup>      | 3403 <sup>2)</sup>      | 3433 <sup>2)</sup>      | 3442 <sup>2)</sup>      |
|                 | 4.34  | Aisle width with pallet 800x1200mm along forks                | Ast(mm)   | 3331 <sup>2)</sup>      | 3630 <sup>2)</sup>      | 3600 <sup>2)</sup>      | 3630 <sup>2)</sup>      | 3639 <sup>2)</sup>      |
| Performances    | 4.35  | Turning radius  | Wa(mm)    | 1548 <sup>2)</sup>      | 1577 <sup>2)</sup>      | 1870 <sup>2)</sup>      | 1945 <sup>2)</sup>      | 1945 <sup>2)</sup>      |
|                 | 4.36  | Minium pivoting distance                                      | b13(mm)   | 0                       | 0                       | 514                     | 598                     | 598                     |
|                 | 5.1   | Travel speed, with/without load                               | km/h      | 15.8/15.8               | 15/15                   | 15.8/15.8               | 15.8/15.8               | 15.8/15.8               |
|                 | 5.2   | Lifting speed,with/without load                               | m/s       | 0.44 / 0.57             | 0.44 / 0.57             | 0.44 / 0.57             | 0.44 / 0.57             | 0.37 / 0.57             |
|                 | 5.3   | Lowering speed, with/without load                             | m/s       | 0.54 / 0.54             | 0.54 / 0.54             | 0.54 / 0.54             | 0.54 / 0.54             | 0.54 / 0.54             |
|                 | 5.5   | Tractive force, with/without load (60 minute rating)          | N         | 3400/3400               | 4400/4500               | 3400/3400               | 4400/4500               | 2816/2953               |
|                 | 5.6   | Maximum tractive force, with/without load (5 minute rating)   | N         | 11000/7300              | 10700/8900              | 11000/8400              | 12300/11100             | 9753/9580               |
|                 | 5.7   | Climbing ability,with/without load(30 minute rating)          | [%]       | 6.1/10.8                | 8.9/13.4                | 7.3/11.1                | 8.9/13.4                | 4.9/7.9                 |
|                 | 5.8   | Maximum climbing ability,with/without load (5 minute rating)  | [%]       | 23.9/23.7               | 22.1/27.2               | 24.3/28.2               | 25.7/34.8               | 17.4/26.5               |
|                 | 5.9   | Acceliration time,with/without load (first 15m)               | [s]       | 6.0/5.8                 | 6.8/6.5                 | 6.3/6.2                 | 6.2/6.2                 | 6.2/5.8                 |
| Drive           | 5.10  | Service brake   |           |                         |                         | Hydraulic / electric    |                         |                         |
|                 | 6.1   | Drive motor hour rating (60 minute rating)                    |           | 2 x 4                   | 2 x 4                   |                         | 2 x 4                   | 2 x 4                   |
|                 | 6.2   | Lift motor,15% rating   | kW        | 8.5                     | 8.5                     | 8.5                     | 8.5                     | 8.5                     |
|                 | 6.3   | Battery according to DIN43 535/36 A/B/C/no                    | kW        | 43531A                  | 43531A                  | 43531A                  | 43531A                  | 43531A                  |
|                 | 6.4   | Batteru voltage / capacity (5 hours)                          |           | 48/ 575                 | 48/700                  | 48/575                  | 48/700                  | 48/700                  |
|                 | 6.5   | Battery weight (+/-5%)  | V / Ah    | 856                     | 1118                    | 856                     | 1118                    | 1118                    |
| Others          | 8.1   | Type of drive control   | kg        |                         |                         |                         |                         |                         |
|                 | 8.2   | Working pressure for attachments                              |           | 200                     | 200                     | 200                     | 200                     | 200                     |
|                 | 8.3   | l flow for attachments  | bar       | 20                      | 20                      | 20                      | 20                      | 20                      |
|                 | 8.4   | Mean noise level at driver's ear                              | db        | -                       | -                       | -                       | -                       | -                       |
|                 | Figures for standard version may vary when optional equipment is fitted<br>1) Figure in brackets refer to triplex mast.<br>2) At 0° tilt angle. |   |           |                         |                         |                         |                         |                         |

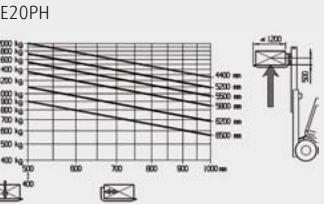
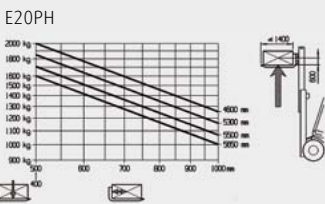
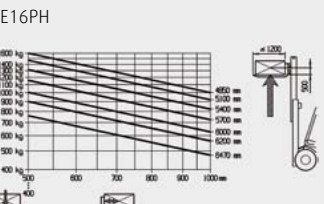
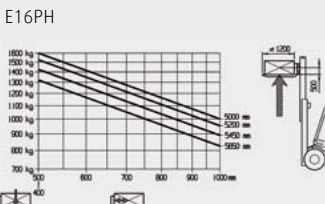
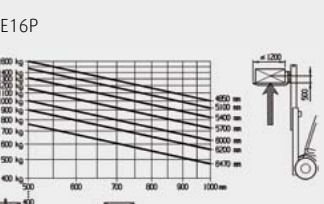
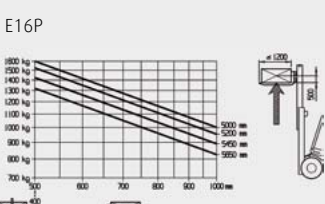
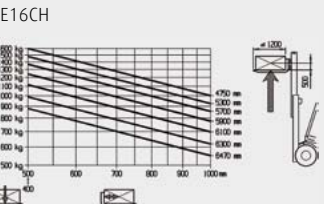
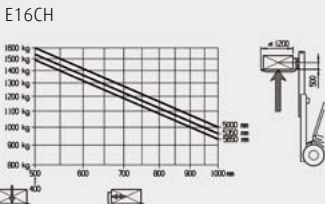
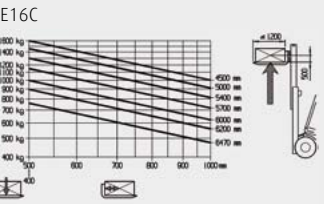
Lifting capacity diagram for standard, duplex mast and triplex mast with standard fork carriage



Standard, Duplex mast



Triplex mast



Mast Datasheet (in: mm)

| Standard masts (mm)                   |    | E16C/E16P |      |      |      |      |      |      |      | E16CH /E16PH /E20PH |      |      |      |      |  |  |  |
|---------------------------------------|----|-----------|------|------|------|------|------|------|------|---------------------|------|------|------|------|--|--|--|
| Lift height                           | h3 | 2850      | 3050 | 3250 | 3850 | 4250 | 4850 | 5650 | 3050 | 3250                | 3850 | 4250 | 4850 | 5650 |  |  |  |
| Retracted height with 150mm free lift | h1 | 1976      | 2076 | 2176 | 2476 | 2676 | 2976 | 3376 | 2078 | 2178                | 2478 | 2678 | 2978 | 3378 |  |  |  |
| Height of overall at max. lift        | h4 | 3643      | 3663 | 3863 | 4463 | 4863 | 5463 | 6263 | 3663 | 3863                | 4463 | 4863 | 5463 | 6263 |  |  |  |
| Free lift                             | h2 | 150       | 150  | 150  | 150  | 150  | 150  | 150  | 150  | 150                 | 150  | 150  | 150  | 150  |  |  |  |

| Duplex masts (mm)                     |    | E16C/E16P |      |  |  |  |  |  | E16CH /E16PH /E20PH |  |  |  |  |  |  |
|---------------------------------------|----|-----------|------|--|--|--|--|--|---------------------|--|--|--|--|--|--|
| Lift height                           | h3 | 2770      | 3070 |  |  |  |  |  | 3070                |  |  |  |  |  |  |
| Retracted height with 150mm free lift | h1 | 1919      | 2069 |  |  |  |  |  | 2071                |  |  |  |  |  |  |
| Height of overall at max. lift        | h4 | 3383      | 3683 |  |  |  |  |  | 3683                |  |  |  |  |  |  |
| Free lift                             | h2 | 1318      | 1468 |  |  |  |  |  | 1468                |  |  |  |  |  |  |

| Triplex masts (mm)                    |    | E16C/E16P |      |      |      |      |      |  | E16CH /E16PH /E20PH |      |      |      |      |  |  |
|---------------------------------------|----|-----------|------|------|------|------|------|--|---------------------|------|------|------|------|--|--|
| Lift height                           | h3 | 4020      | 4470 | 4770 | 5470 | 5920 | 6220 |  | 4470                | 4770 | 5470 | 5920 | 6220 |  |  |
| Retracted height with 150mm free lift | h1 | 1919      | 2069 | 2119 | 2469 | 2619 | 2719 |  | 2071                | 2171 | 2471 | 2621 | 2771 |  |  |
| Height of overall at max. lift        | h4 | 4633      | 5083 | 6083 | 6533 | 6533 | 6833 |  | 5083                | 5383 | 6083 | 6583 | 6883 |  |  |
| Free lift                             | h2 | 1318      | 1468 | 1568 | 1868 | 2018 | 2118 |  | 1468                | 1568 | 1868 | 2018 | 2118 |  |  |