

	X14J	X17J	X19J	X23J
Working Height w 120 kg capacity	13.80 m	16.81 m	18.67 m	23.10 m
Platform Height w 120 kg capacity	11.80 m	14.81 m	16.67 m	21.10 m
Working Height w 200 kg capacity	12.15 m	15.12 m	16.96 m	21.70 m
Platform Height w 200 kg capacity	10.15 m	13.12 m	14.96 m	19.70 m
Horizontal Outreach (Std Platform w 120 kg)	6.76 m	7.68 m	6.40 m	11.63 m
Horizontal Outreach (Std Platform w 200 kg)	5.92 m	6.45 m	4.80 m	10.25 m
Up & Over Height w 120 kg	5.58 m	6.08 m	7.66 m	9.38 m
Up & Over Height w 200 kg	5.52 m	5.86 m	6.23 m	7.96 m
Swing (non continuous)	361°	361°	361°	361°
Jib - overall length	1.56 m	1.43 m	1.43 m	1.43 m
Jib - range of articulation (+/-)	83° (+0° / -83°)	88° (-2° / -90°)	83° (+0° / -83°)	85° (-1° / -86°)
Platform size (standard 2 persons)	0.69 m x 1.30 m	0.76 m x 1.30 m	0.69 m x 1.30 m	0.69 m x 1.30 m
Platform size (narrow one person)	0.59 m x 0.79 m	0.62 m m x 0.79 m	0.59 m x 0.79 m	0.59 m x 0.79 m
Stowed width (with std. 2P platform)	1.48 m	1.31 m	1.48 m	1.48 m
Stowed width (without platform)	0.79 m <sup>1</sup>	0.79 m <sup>3</sup>	0.79 m <sup>4</sup>	0.99 m <sup>5</sup>
Stowed height (on tracks)	2.07 m <sup>1</sup>	1.99 m <sup>3</sup>	1.98 m <sup>4</sup>	1.99 m <sup>6</sup>
Stowed length (on tracks)	4.02 m	4.53 m	4.47 m	6 m
Outrigger footprint	2.87 m x 2.91 m	2.89 m x 2.88 m	2.89 m x 2.88 m	3.98 m x 3.98 m
Machine weight (with standard platform)	1,398 kg <sup>7</sup>	2,100 kg <sup>7</sup>	2,080 kg <sup>7</sup>	2,990 kg <sup>7</sup>
Operating weight (with petrol engine)	1,430 kg	2,152 kg	2,106 kg	3,100 Kg
Maximum ground bearing pressure (on outriggers)	1.94 kg/cm²	2.04 kg/cm²	1.94 kg/cm²	3.06 kg/cm²
Maximum ground bearing pressure (on tracks)	0.41 kg/cm²	0.63 kg/cm²	0.63 kg/cm²	0.49 kg/cm²
Maximum drive speed (single speed m/c) Petrol	1.4 km/h	1.7 km/h	1.7 km/h	—
Maximum drive speed (two speed m/c) Petrol	2.8 km/h	3.3 km/h	3.3 km/h	1 / 1.7 km/h <sup>8</sup>
Gradeability	28%	26%	28%	28%
Maximum operating slope	10°	11°	11°	13°
Max. Approach / Depart angles	Front 20° / Rear 20°	Front 20° / Rear 21°	Front 21° / Rear 21°	Front 22° / Rear 25°
Track size - McLaren low profile black rubber	1.24 m x 0.18 m x 0.30 m	1.24 m x 0.18 m x 0.30 m	1.24 m x 0.18 m x 0.30 m	—
Track size - Bridgestone high profile black rubber	—	—	—	1.76 m x 0.23 m x 0.38 m
Width of Undercarriage (Retracted/Extended)	0.79 m / 0.79 m	0.79 m / 1.09 m	0.79 m / 1.09 m	0.99 m / 1.29 m
AC electric motor	110V or 220V, 50Hz, 2.2 kW	110V or 220V, 50Hz, 2.2 kW	110V or 220V, 50Hz, 2.2 kW	110V or 220V, 50Hz, 2.2 kW
Engine	Honda GX270, 6.6 kW Petrol	Honda iGX440, 11 kW Petrol	Honda iGX440, 11 kW Petrol	Honda iGX440, 11 kW Petrol

<sup>1</sup> With outrigger pads removed. Pads increase width by 100 mm and height by 30 mm in stowed position.

<sup>2</sup> With outrigger pads removed. Pads increase width by 178 mm and height by 85 mm in stowed position.

<sup>3</sup> With outrigger pads removed. Pads increase width by 196 mm and height by 124 mm in stowed position.


<sup>4</sup> With outrigger pads removed. Pads increase width by 196 mm and height by 120 mm in stowed position.

<sup>5</sup> With outrigger pads removed. Pads increase width by 75 mm in stowed position.

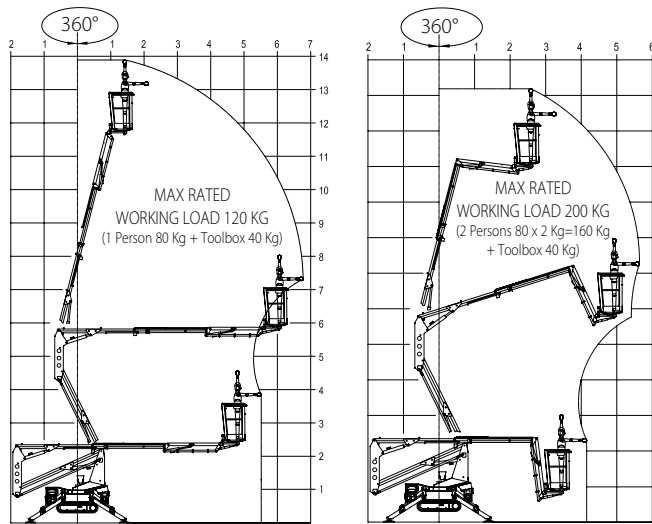
<sup>6</sup> No change in this dimension with or without outrigger pads removed.

<sup>7</sup> Dry weight. Certain options or country standards may increase weight and/or dimensions.

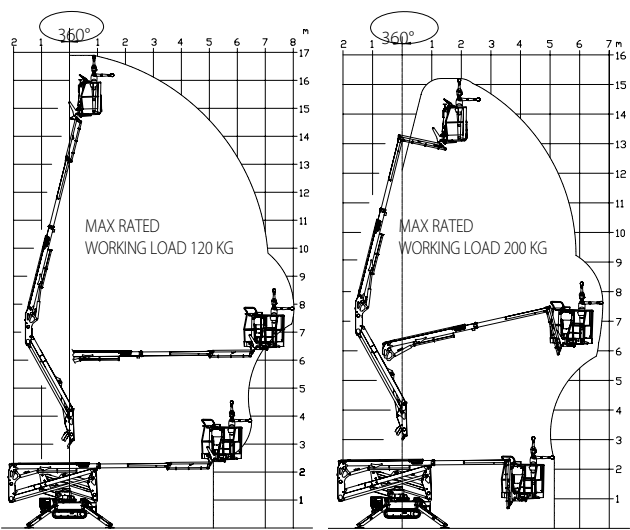
<sup>8</sup> Two speed drive standard on this model.



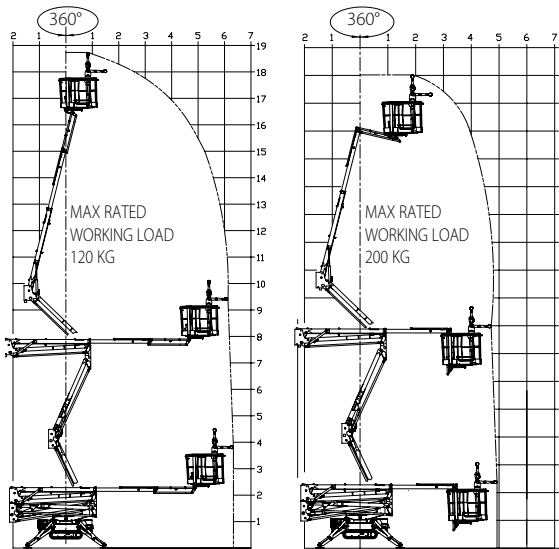
JLG Model X14J



JLG Model X17J



JLG Model X19J



JLG Model X23J

