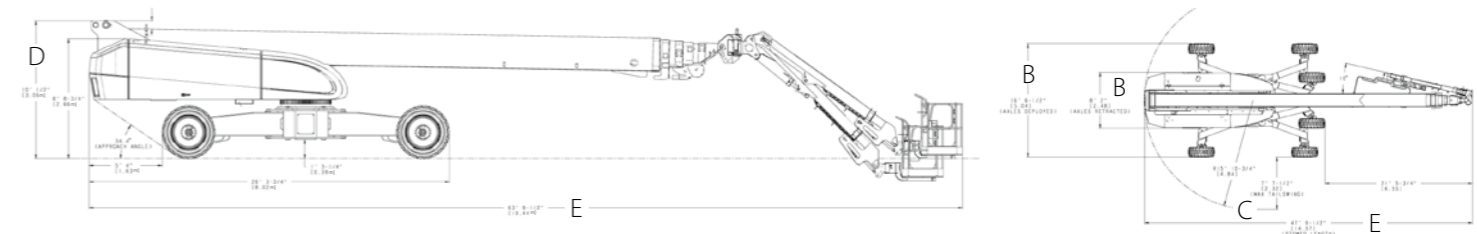
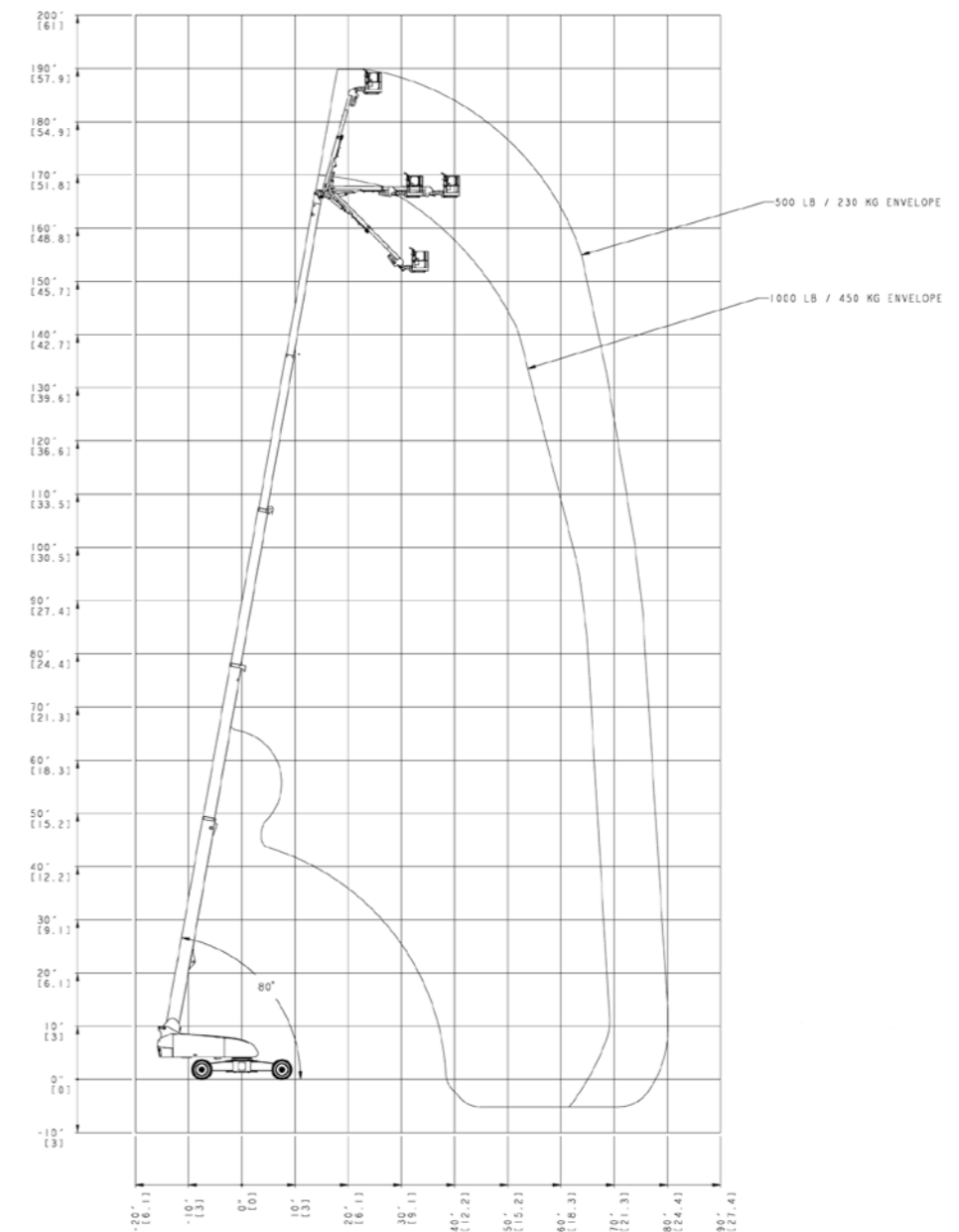


| | 1850SJ |
|--|---------------------------|
| Working Height | 58.56 m |
| Platform Height | 56.56 m |
| Horizontal Outreach | 24.38 m |
| Working Outreach * | 25.03 m* |
| Swing (Continuous) | 360° |
| Platform Capacity - Restricted | 450 kg |
| Platform Capacity - Unrestricted | 230 kg |
| Platform Rotator (Hydraulic) | 173° |
| Jib - Overall Length | — |
| Jib - Telescope : retracted | 3.96 m |
| Jib - Telescope : extended | 6.10 m |
| Jib - Range of articulation | 120° Vertical (+75°/-45°) |
| A. Platform Size | 0.91 m x 2.44 m |
| B. Overall Width (Axles Retracted) | 2.49 m |
| Overall Width (Axles Extended) | 5.03 m |
| C. Tailswing (working condition) | 2.31 m |
| D. Stowed Height | 3.05 m |
| E. Stowed Length | 19.46 m |
| Transport length | 14.58 m |
| F. Wheelbase (Axles Extended) | 4.57 m |
| Ground Clearance | 0.41 m |
| Machine weight ¹ | 27,360 kg |
| Maximum Ground Bearing Pressure | 8.41 kg/cm ² |
| Drive Speed | 4.5 km/h |
| Gradeability | 40% |
| Tyres | 445/50D710 Foam Filled |
| Turning Radius - Inside (Axles Retracted) | 7.11 m |
| Turning Radius - Inside (Axles Extended) | 2.31 m |
| Turning Radius - Outside (Axles Retracted) | 9.52 m |
| Turning Radius - Outside (Axles Extended) | 6.60 m |
| Diesel Engine - Deutz TCD 3.6 L4 | 74.4 kW |
| Fuel Tank Capacity | 200 L |
| Hydraulic System | 284 L |
| Auxiliary Power | 12V DC |

JLG Model 1850SJ



* Working outreach is horizontal outreach plus 65cm.
¹ Certain options or country standards may increase weight and/or dimensions.

