

Specifications

Rated Capacity @ 24 in. (610 mm) Load Center	5,500 lb	2,495 kg
Maximum Lift Height	18 ft 4 in.	5.6 m
Capacity @ Maximum Lift Height	4,400 lb	1,996 kg
Maximum Reach	10 ft 11 in.	3.33 m
Capacity @ Maximum Reach	1,850 lb	839 kg
Approximate Operating Weight	11,000 lb	4,990 kg
Length (Less Forks)	150.4 in.	3.80 m
Width	71.5 in.	1.82 m
Height	75.6 in.	1.92 m
Wheelbase	90 in.	2.29 m
Ground Clearance	10.8 in.	274 mm
Outside Turning Radius	127 in.	3.20 m
Drive	4 x 4	
Engine	Deutz TD 2.9 L4	
HP @ RPM	74 hp @ 1,800 rpm	
Transmission	Hydrostatic	
Steering	All-Wheel	
Tires	12 x 16.5	
Maximum Travel Speed	15 mph	(25 kmph)
Frame Tilt Left/Right	—	

Accessories & Options

- Enclosed Cab
- Battery Disconnect Switch
- Road Light Package
- Work Light Package
- Skylight/Rear Wiper Package
- Radio Ready Kit (Enclosed Cab Only)
- Tow Hitch w/trailer plug
- Tow Hitch w/automatic pin & trailer plug
- Molded Floor Mat
- Fenders
- Brick Guard
- Air Conditioning
- Block Heater
- Tilt Steering
- Hydraulic Quick Switch
- Rear Auxiliary Hydraulics
- Universal Skid Steer Coupler
- Boom Brushes
- Reversing Fan
- Pre-cleaner

Attachments

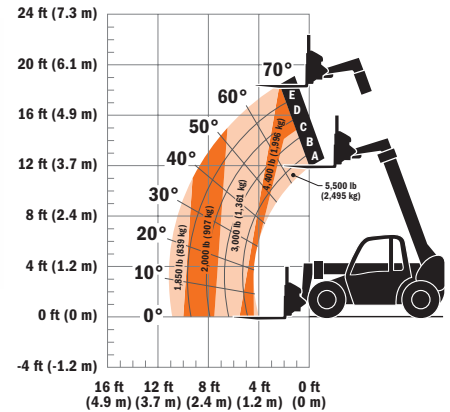
Standard Carriage	50 in.	1.3 m
Side-tilt Carriage	48 in.	1.2 m
Pallet Forks	2 in. x 4 in. x 48 in.	51 mm x 102 mm x 1.2 m
Lumber Forks	1.5 in. x 6 in. x 60 in.	38 mm x 152 mm x 1.5 m
Cubing Forks	2 in. x 2 in. x 48 in.	51 mm x 51 mm x 1.2 m
General Purpose Bucket	73 in., 1.0 cu yd	1.85 m, 0.76 m ³
Light Material Bucket	72 in., 1.7 cu yd	1.8 m, 1.29 m ³
Grapple Bucket	72 in., 1.0 cu yd	1.8 m, 0.76 m ³
Lifting Hook		

Dimensions

All dimensions are approximate.



Load Chart



VISIT JLG.COM TODAY TO LEARN MORE ABOUT THE G5-18A AND TO LOCATE A DEALER NEAR YOU.



The JLG "1 & 5" Warranty

JLG Industries, Inc., backs its products with its exclusive "1 & 5" Warranty. We provide coverage on all products for one (1) full year, and cover all specified major structural components for five (5) years. Due to continuous product improvements, we reserve the right to make specification and/or equipment changes without prior notification.

Part No.: 3132246
Printed in USA

JLG Industries, Inc.
1 JLG Drive
McConnellsburg, PA 17233-9533
Telephone 717-485-5161
Toll-free in US 877-JLG-LIFT
Fax 717-485-6417
www.jlg.com

An Oshkosh Corporation Company