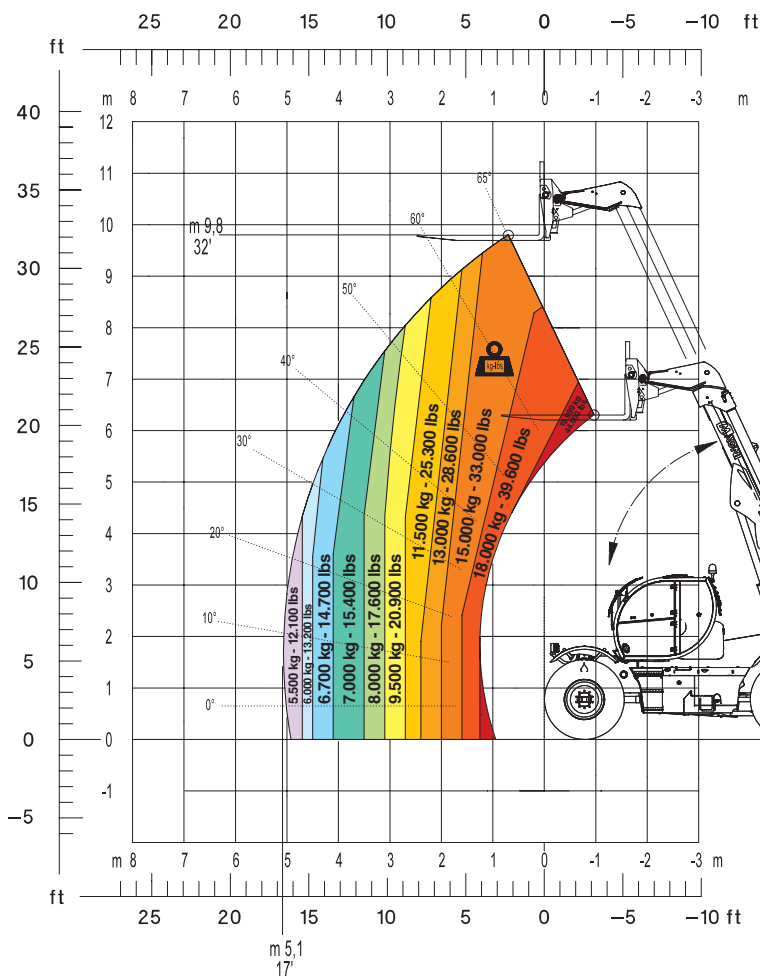




Load chart with forks



**PRELIMINARY**

<b>HTH20.10</b>	<b>MACHINE MODEL</b>	Telescopic handler	HTH 20.10
		Maximum lifting capacity	19.999 Kg at 600 mm load center
		Maximum lifting height	10,4 m
	<b>ENGINE</b>	Type	Mercedes OM 934 LA Stage IV
		Rated power	129 kW - 175 HP at 2.200 rpm
		Maximum torque	750 Nm at 1.200-1.600 rpm
		Displacement	3,6 l
		Cylinders	4 cylinders / 5.130 cm3
	<b>TRANSMISSION</b>	Type	Hydrostatic
		Model	Bosch – Rexroth
Displacements		Variable displacement pump electronically controlled. Variable displacement motor	
Gear box		2 speeds forward-reverse	
<b>WEIGHTS</b>	Total unladen	20.500 kg	
	Front axle unladen (boom retracted and lowered)	9.000 kg	
	Rear axle unladen (boom retracted and lowered)	11.500 kg	
<b>TANKS CAPACITIES</b>	Fuel tank	200 l	
	AdBlue	40 l	
	Hydraulic oil tank	210 l	
	Engine oil tank	20,5 l	
	Cooling liquid	25 l	
<b>HYDRAULIC CIRCUIT</b>	Max. operating system pressure	350 bar	
	Circuit type	Load sensing	

**EAZI SALES & SERVICE**

Sole Distributor of:

**MAGNI**

Eazi Sales & Service  
 Head Office  
 Tel: +27 87 550 4131  
 Tel: +27 11 312 7380  
 Tel Int: +27 86 100 5540  
 Fax: +27 11 312 7381  
 Email: info@eazisales.co.za  
 www.eazisales.co.za

The data in this brochure are informative and subject to change without notice