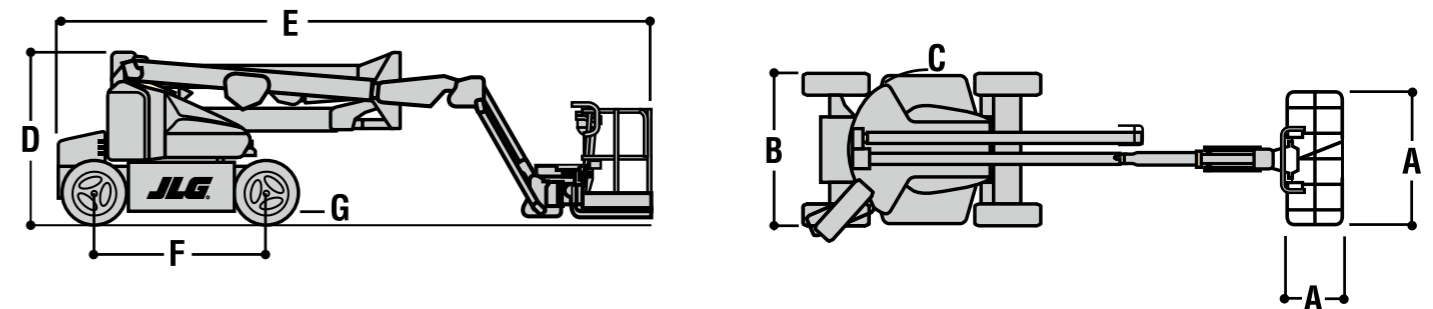
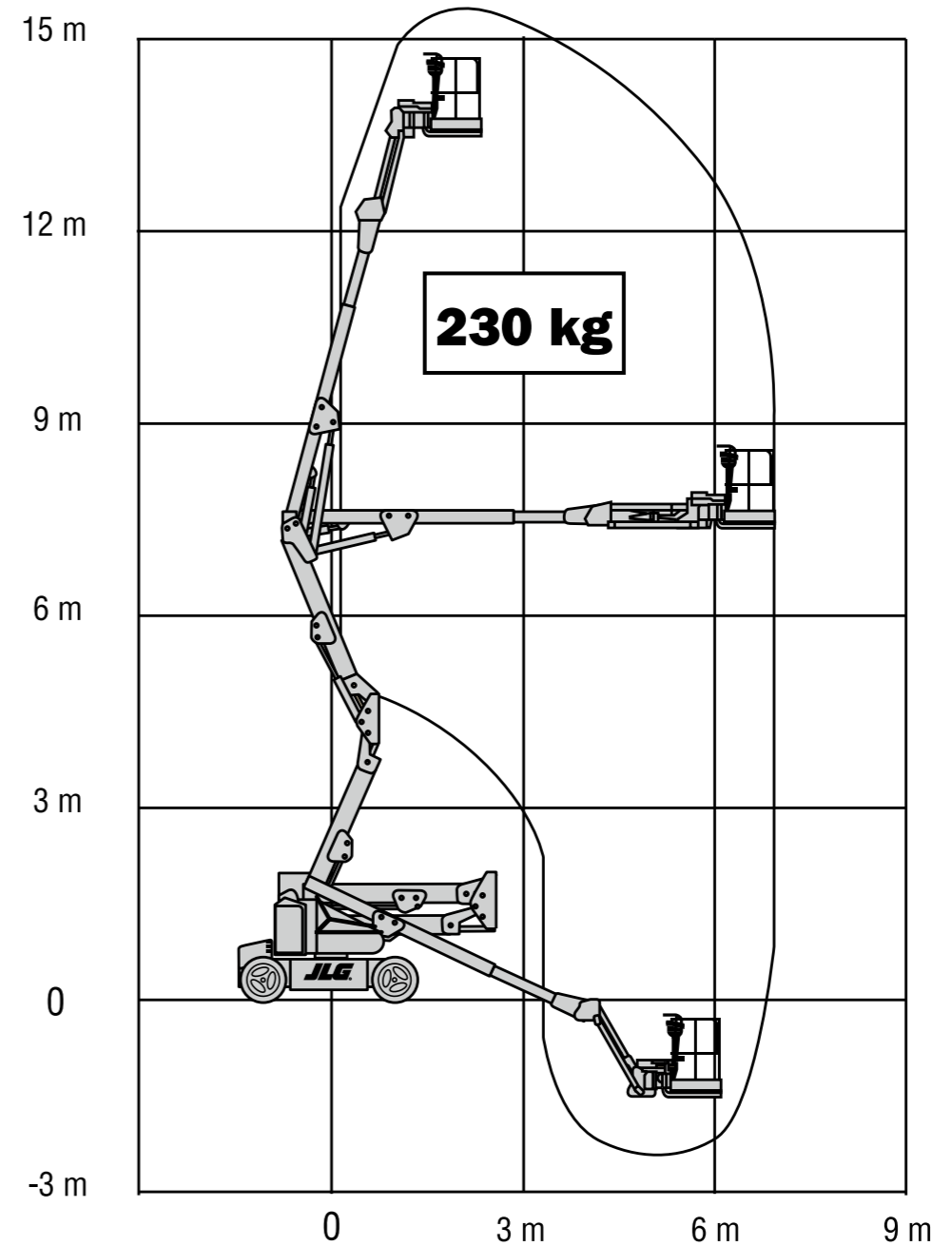


| | E450AJ | M450AJ |
|----------------------------------|----------------------------|--------------------------------|
| Working Height | 15.72 m | 15.72 m |
| Platform Height | 13.72 m | 13.72 m |
| Horizontal Outreach | 7.24 m | 7.24 m |
| Working Outreach * | 7.89 m* | 7.89 m* |
| Up and Over Height | 7.70 m | 7.70 m |
| Swing (non-continuous) | 360° | 360° |
| Platform Capacity - Unrestricted | 230 kg | 230 kg |
| Platform Rotator (Hydraulic) | 180° | 180° |
| Jib - Overall Length | 1.24 m | 1.24 m |
| Jib - Range of articulation | 144° (+84°/ -60°) | 144° (+84°/ -60°) |
| A. Platform Size | 0.76 m x 1.52 m | 0.76 m x 1.52 m |
| B. Overall Width | 1.75 m | 1.75 m |
| C. Tailswing (working condition) | Zero | Zero |
| D. Stowed Height | 2.01 m | 2.01 m |
| E. Stowed Length | 6.45 m | 6.45 m |
| F. Wheelbase | 2.01 m | 2.01 m |
| G. Ground Clearance | 0.20 m | 0.20 m |
| Machine weight ¹ | 6,670 kg | 6,700 kg |
| Maximum Ground Bearing Pressure | 5.3 kg/cm ² | 5.3 kg/cm ² |
| Drive Speed | 5.2 km/h | 5.2 km/h |
| Gradeability | 30% | 30% |
| Tyres | 240/55-17.5 Foam Filled | 240/55-17.5 Foam Filled |
| Turning Radius - Inside | 0.61 m | 0.61 m |
| Turning Radius - Outside | 3.15 m | 3.15 m |
| Electrical System | 48V DC | 48V DC |
| Batteries | 8 x 6V 370A/hr | 8 x 6V 370A/hr |
| Drive Motors | Dual AC Traction | Dual AC Traction |
| Brakes | Automatic Spring Applied | |
| Hydraulic Motor | Perm. Magnet | Perm. Magnet |
| Hydraulic Pump | Gear Pump | Gear Pump |
| Hydraulic Reservoir | 20.0 L | 20.0 L |
| Generator Set - Fully Automatic | — | Kubota OC60 Air-cooled 5 kW |
| Generator Fuel Tank | — | 15.0 L |

JLG Models E450AJ & M450AJ



* Working outreach is horizontal outreach plus 65cm.
¹ Certain options or country standards may increase weight and/or dimensions.

