



HTH ATTACHMENTS



FORKS

HOOKS

CLAMPS



THE TRADITION OF THE ATTACHMENT

The tradition of the attachment is deeply rooted in Magni Telescopic Handlers, where we know that it is the attachment that gives our machines a function, transforming them into a crane, a men platform, a forklift trucks or any other function that the customer requires.

QUALITY, VERSATILITY AND PROFESSIONALISM

QUALITY: Magni Telescopic Handlers also applies on attachments the same quality standards that it applies in the production of its machines. In fact, we use only internationally renowned brands like Sauer-Danfoss, Bosh Rexroth and Reggiana Riduttori and the most stringent checks used in the production line are also applied here.

VERSATILITY: At Magni Telescopic Handler we have created a productive technical structure entirely dedicated to attachments which makes it possible for us to be extremely reactive in analysing and proposing customised solutions required by our customers. For us "special " is the "standard".

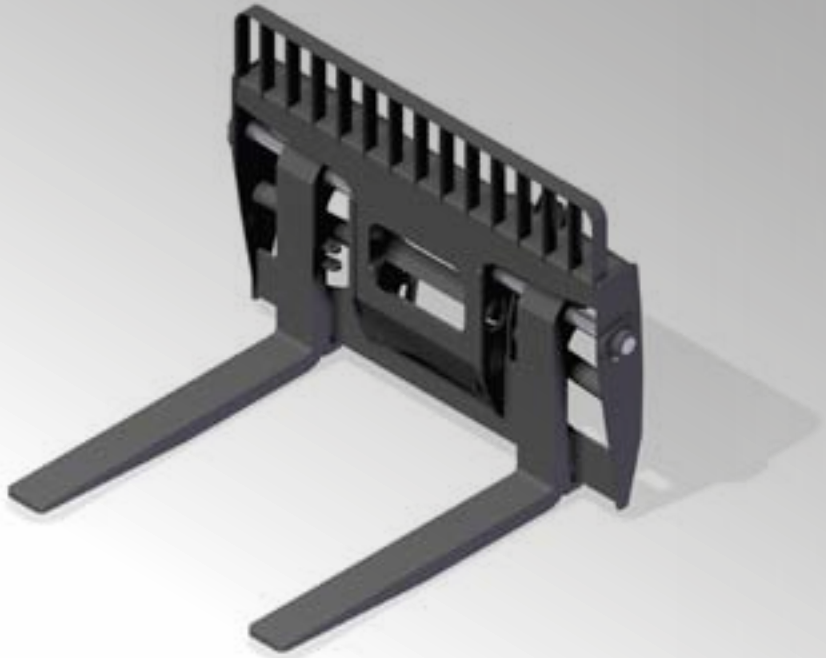
PROFESSIONALISM: The experience acquired in over twenty years in the sector has enabled us to design and construct a range of extremely modern attachments with technical solutions that we have protected by means of international patents.

HTH ATTACHMENTS



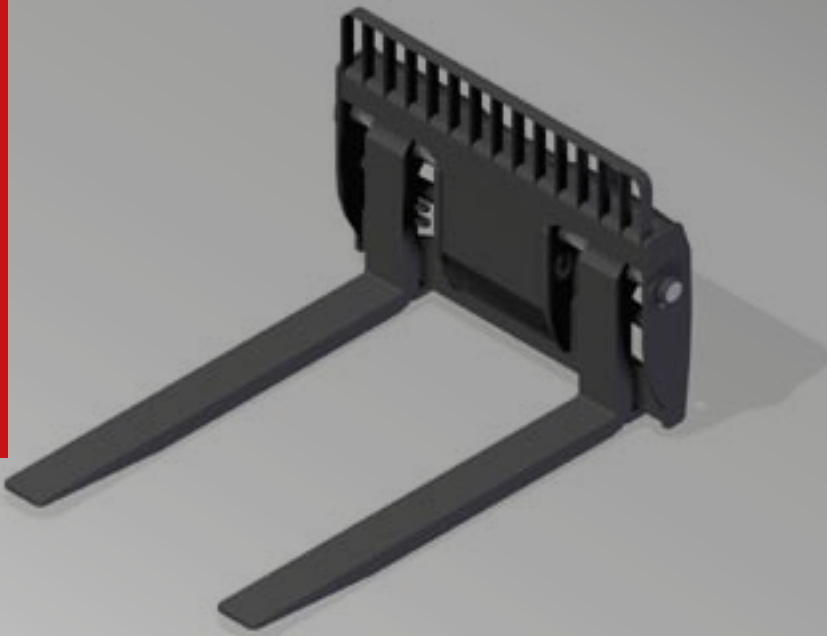
15 TON FORK
CARRIAGE (F 15 T)

- FEATURES
- Capacity: 15.000 kg
(center of gravity 600 mm)
 - Fork dimensions: 200 x 80 x 1.500 mm
 - Maximum opening: 1.950 mm
 - Maximum closure: 1.160 mm
 - Automatic attachments identification tag



23 TON FORK
CARRIAGE WITH
POSITIONER DEVICE
(FCP 23 T)

- FEATURES
- Capacity: 20.000 kg
(center of gravity 900 mm)
 - Fork dimensions: 250 x 100 x 1.800 mm
 - Maximum opening: 1.950 mm
 - Maximum closure: 1.160 mm
 - Hydraulic positioner device
 - Automatic attachments identification tag



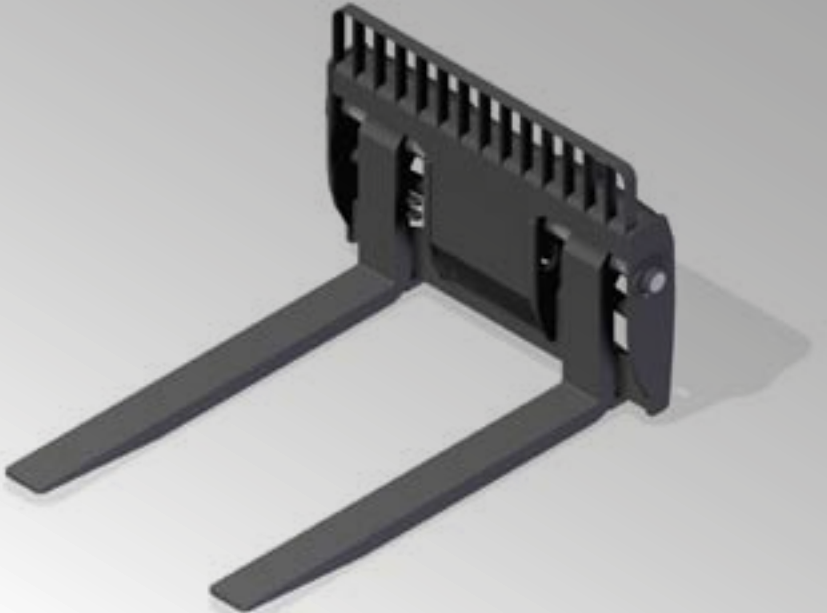
15 TON FORK
CARRIAGE WITH
POSITIONER DEVICE
(FCP 15 T)

- FEATURES
- Capacity: 15.000 kg
(center of gravity 600 mm)
 - Fork dimensions: 200 x 80 x 1.500 mm
 - Maximum opening: 1.950 mm
 - Maximum closure: 1.160 mm
 - Hydraulic positioner device
 - Automatic attachments identification tag



25 TON FORK
CARRIAGE (F 25 T)

- FEATURES
- Capacity: 25.000 kg
(center of gravity 900 mm)
 - Fork dimensions: 250 x 100 x 2.400 mm
 - Maximum opening: 2.000 mm
 - Maximum closure: 1.260 mm
 - Automatic attachments identification tag



23 TON FORK
CARRIAGE (F 23 T)

- FEATURES
- Capacity: 20.000 kg
(center of gravity 900 mm)
 - Fork dimensions: 250 x 100 x 1.800 mm
 - Maximum opening: 1.950 mm
 - Maximum closure: 1.160 mm
 - Automatic attachments identification tag



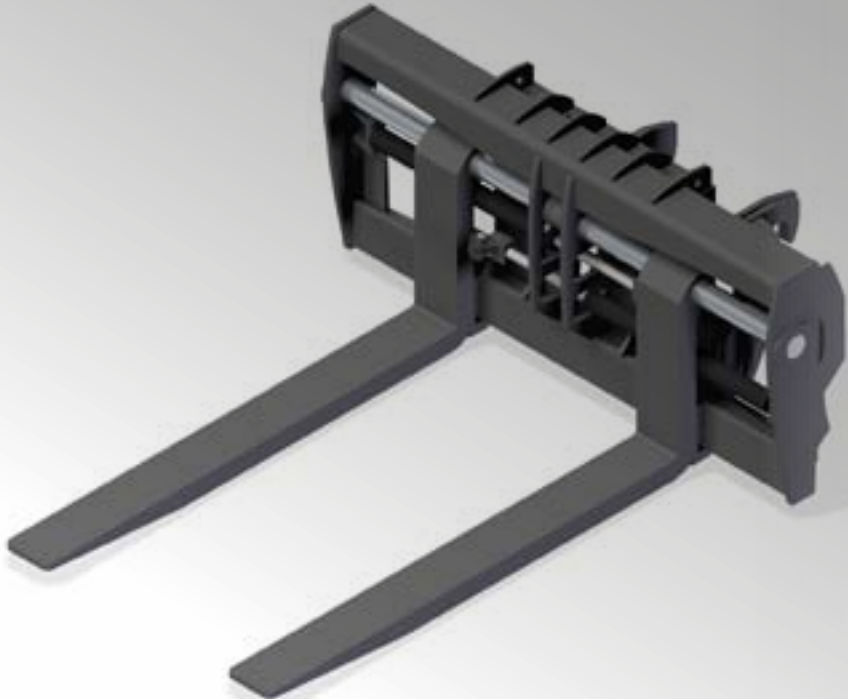
25 TON FORK
CARRIAGE WITH
POSITIONER DEVICE
(FCP 25 T)

- FEATURES
- Capacity: 25.000 kg
(center of gravity 900 mm)
 - Fork dimensions: 250 x 100 x 2.400 mm
 - Maximum opening: 2.000 mm
 - Maximum closure: 1.260 mm
 - Hydraulic positioner device
 - Automatic attachments identification tag



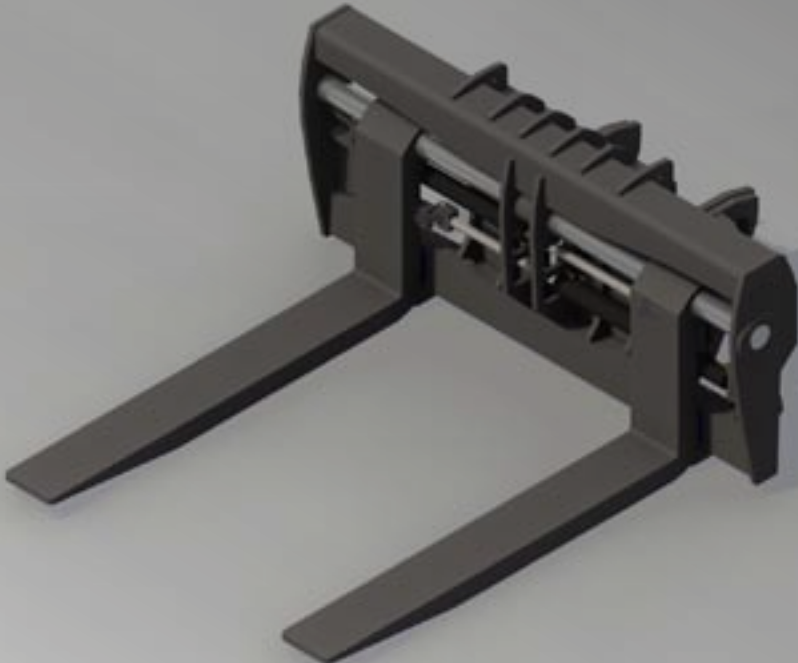
25 TON FORK CARRIAGE WITH POSITIONER DEVICE AND SIDE SHIFT (FCPT 25 T)

- FEATURES
- Capacity: 25.000 kg (center of gravity 900 mm)
 - Fork dimensions: 250 x 100 x 2.400 mm
 - Maximum opening: 2.550 mm
 - Maximum closure: 730 mm
 - Hydraulic positioner device
 - Side shift: +/- 730 mm
 - Automatic attachments identification tag



30 TON FORK CARRIAGE WITH POSITIONER DEVICE AND SIDE SHIFT (FCPT 30 T)

- FEATURES
- Capacity: 30.000 kg (center of gravity 1.200 mm)
 - Fork dimensions: 300 x 115 x 2.400 mm
 - Maximum opening: 2.650 mm
 - Maximum closure: 830 mm
 - Hydraulic positioner device
 - Side shift: +/- 300 mm
 - Automatic attachments identification tag



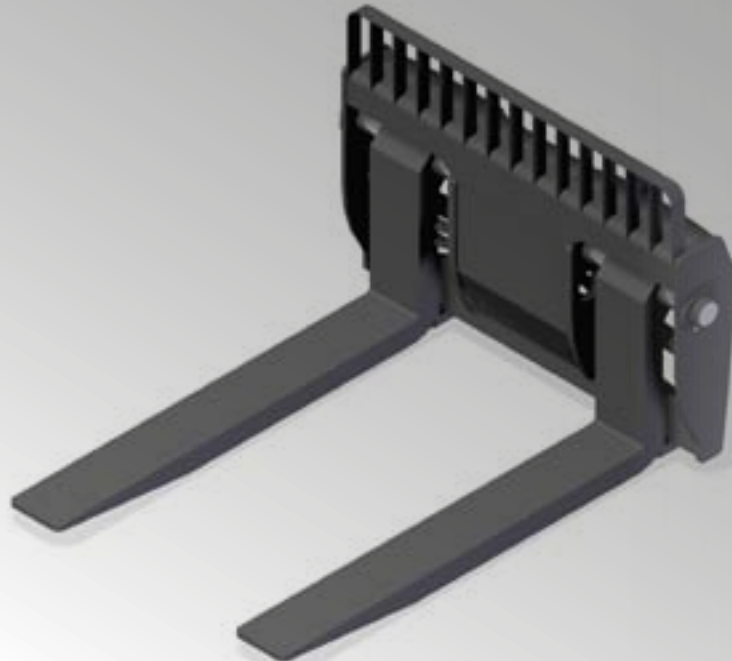
30 TON FORK CARRIAGE (F 30 T)

- FEATURES
- Capacity: 30.000 kg (center of gravity 1.200 mm)
 - Fork dimensions: 300 x 115 x 2.400 mm
 - Maximum opening: 2.000 mm
 - Maximum closure: 1.350 mm
 - Automatic attachments identification tag



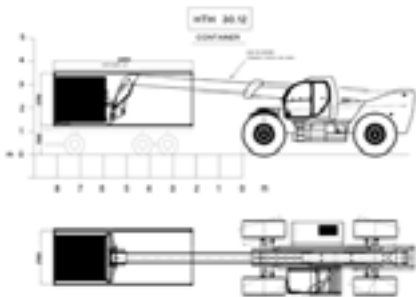
30 TON FORK CARRIAGE WITH POSITIONER DEVICE (FCP 30 T)

- FEATURES
- Capacity: 30.000 kg (center of gravity 1.200 mm)
 - Fork dimensions: 300 x 00650 mm
 - Maximum closure: 1.350 mm
 - Hydraulic positioner device
 - Side shift: +/- 300 mm
 - Automatic attachments identification tag

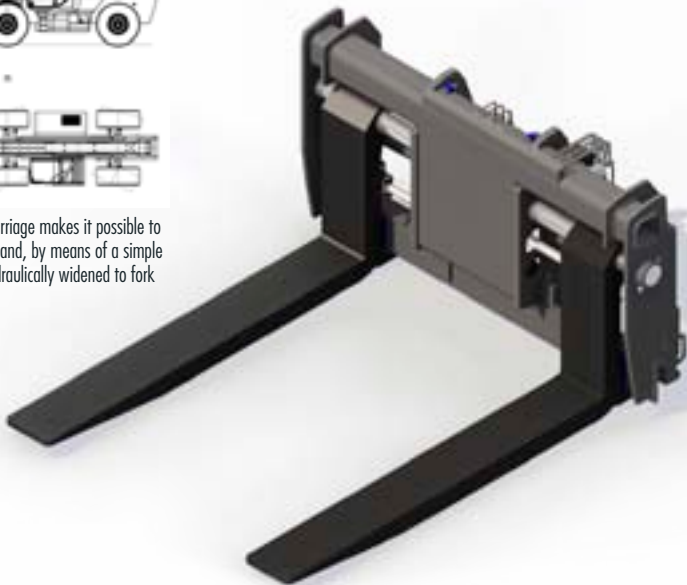


30 TON EXTENDABLE FORK CARRIAGE WITH POSITIONER DEVICE (FCEP 30 T)

- FEATURES
- Capacity: 30.000 kg (center of gravity 1.200 mm)
 - Fork dimensions: 300 x 115 x 2.400 mm
 - Maximum opening: 2.400 mm
 - Maximum closure: 1.360 mm
 - Hydraulic positioner device
 - Fork carriage extension: from 2.100 mm up to 2.500 mm
 - Automatic attachments identification tag



Thanks to its patented system, the fork carriage makes it possible to carry and pick up loads inside a container and, by means of a simple command in the cab, the forks can be hydraulically widened to fork the container itself.



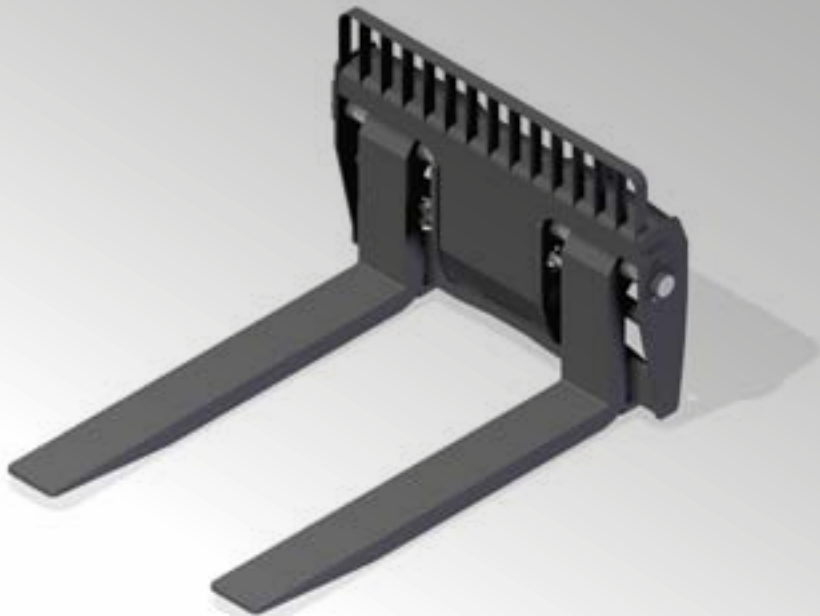
35 TON FORK CARRIAGE (F 35 T)

- FEATURES
- Capacity: 35.000 kg (center of gravity 1.200 mm)
 - Fork dimensions: 320 x 115 x 2.400 mm
 - Maximum opening: 2.030 mm
 - Maximum closure: 1.400 mm
 - Automatic attachments identification tag



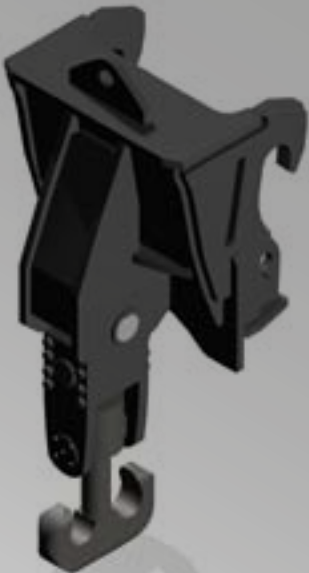
35 TON FORK CARRIAGE WITH POSITIONER DEVICE (FCP 35 T)

FEATURES
Capacity: 35.000 kg
(center of gravity 1.200 mm)
Length: 15.382
Fork dimensions: 320 x 115 x 2.400 mm
Maximum opening: 2.030 mm
Maximum closure: 1.400 mm
Hydraulic positioner device
Automatic attachments identification tag



30 TON HOOK (H 30S)

FEATURES
Capacity: 30.000 kg
Length: 760 mm
Automatic attachments identification tag



40 TON SHORT HOOK (H 40 S)

FEATURES
Capacity: 40.000 kg
Length: 760 mm
Automatic attachments identification tag



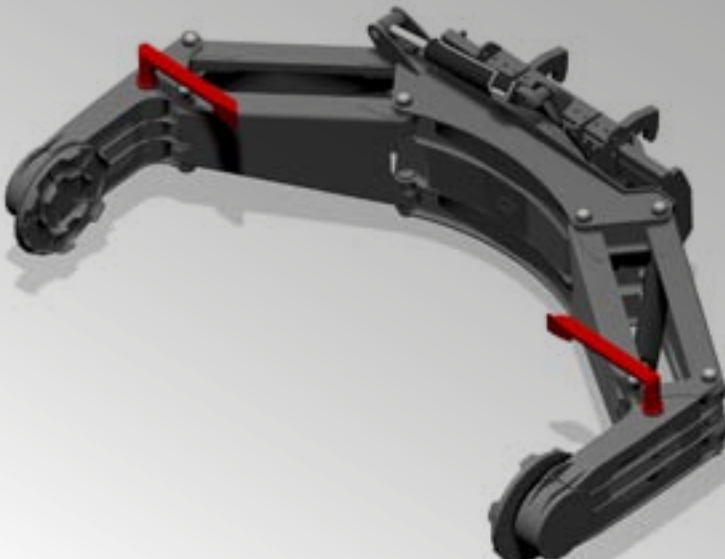
35 TON FORK CARRIAGE WITH POSITIONER DEVICE AND SIDE SHIFT (FCPT 35 T)

FEATURES
Capacity: 35.000 kg
(center of gravity 1.200 mm)
Length: 14.934
Fork dimensions: 320 x 115 x 2.400 mm
Maximum opening: 2.650 mm
Maximum closure: 830 mm
Hydraulic positioner device
Side shift: +/- 300 mm
Automatic attachments identification tag



TIRES CLAMP 08.63 (TC 08.63)

FEATURES
This clamp allows to handle tires from 24" up to tires 63", has got side shift and can be hydraulically widened.
Capacity: 8.000 kg
Maximum opening: 4.013 mm (For tyres up to 63 inches)
Minimum opening: 1.230 mm (For tyres up to 24 inches)
Side-shift: 600 mm (+/-300 mm)
Clamp rotation: 344°
Tire rotation: 360° continuousAutomatic
attachments identification tag



15 TON HOOK (H 15)

FEATURES
Capacity: 15.000 kg
Length: 760 mm
Automatic attachments identification tag



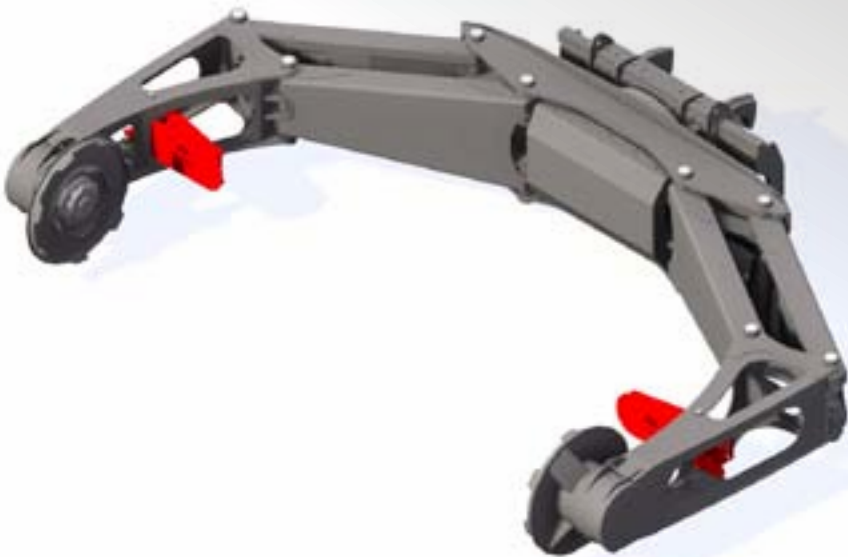
23 TON HOOK (H 23)

FEATURES
Capacity: 23.000 kg
Length: 760 mm
Automatic attachments identification tag



TIRES CLAMP 16.63 (TC 16.63)

FEATURES
This clamp allows to handle tires from 24" up to tires 63", has got side shift and can be hydraulically widened.
Capacity: 16.000 kg
Maximum opening: 4.297 mm (For tires up to 63 inches)
Minimum opening: 1.188 mm (For tires up to 20 inches)
Side-shift: 600 mm (+/-300 mm)
Clamp rotation: 344°
Tire rotation: 360° continuousAutomatic
Automatic attachments identification tag



MULTI TOOL MANIPULATOR (MTM)

On this special support is possible to fit 3 different kind of attachments:

Wheel Hub Handler (MTS + WHH)
Hub With Suspension Cylinder Handler (MTS + HSCH)
Cylinders Clamp (MTS + CC)



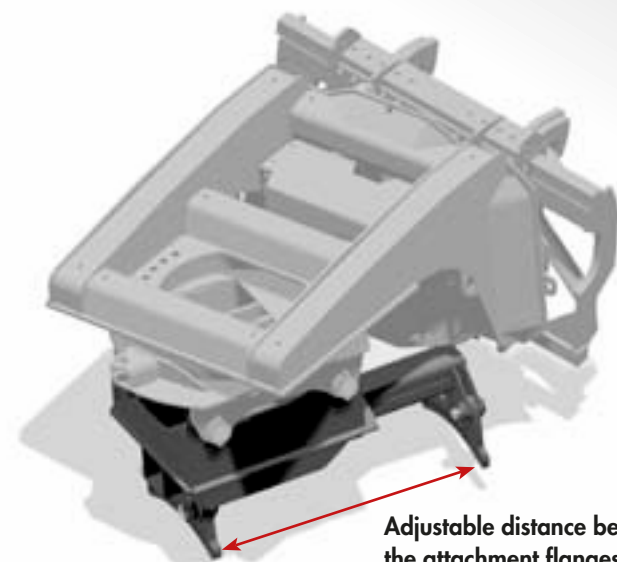
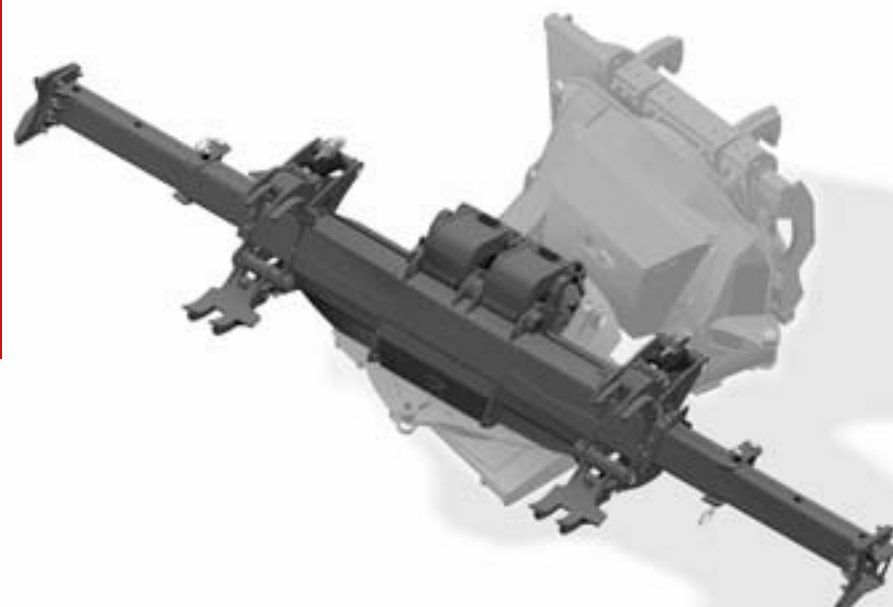
WHEEL HUB HANDLER (MTM + RWHT)

Capacity: 22 ton
Automatic attachments identification tag



CYLINDERS CLAMP (MTM + CC)

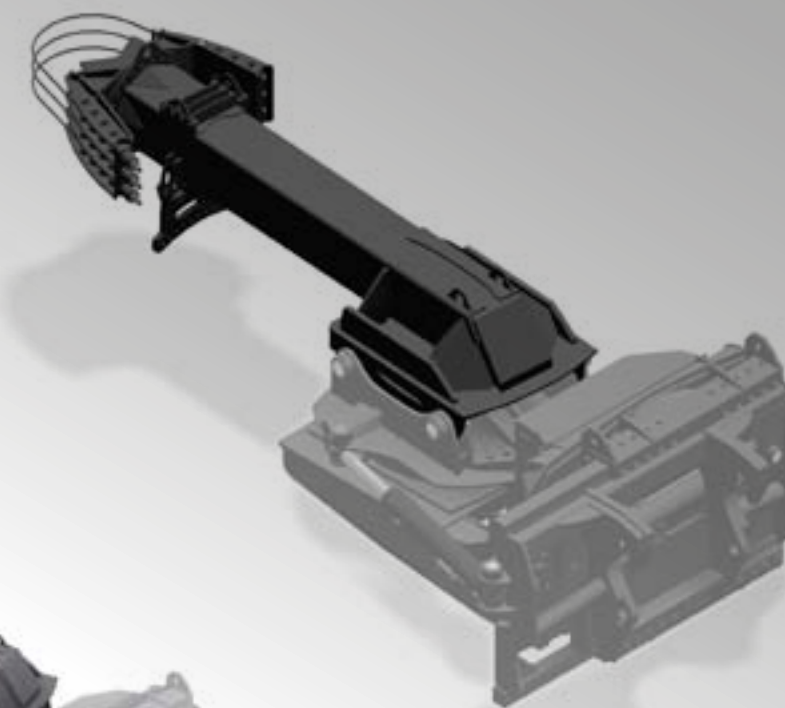
Capacity: 11 tons
Maximum opening: 620 mm
Minimum opening: 250 mm
Clamp rotation: 344°
Cylinder rotation: +/- 30°
Tilting: 90°
Longitudinal length safety clamp for cylinder: 2.760 mm (min); 5.800 mm (max)
Automatic attachments identification tag



Adjustable distance between the attachment flanges to fit the size of the hub:
Min: 892 mm; Max: 1.362 mm

HUB WITH SUSPENSION CYLINDER HANDLER (MTM + SCT)

Capacity:
9 ton (hub + suspension cylinder)
7 ton (just cylinders)
Length: 4.240 mm
Tool rotation: 340°
Hub rotation: 0°/90°/180°/270°
Clamp rotation: +/- 30°
Side shift: +/- 300 mm
Automatic attachments identification tag

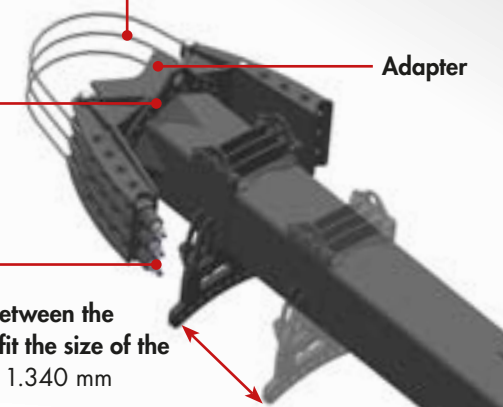


Cylinder diameter admitted:
370 mm (min) – 530 mm (max)
without adapter/250 mm (min) – 425 (max) with adapter

Possibility of orienting the grip of the cylinder on 360°

Possibility to reverse the cables fixed part which keep the cylinder to adjust their length to handle the suspension cylinder on the right or left part of the attachment.

Adjustable distance between the attachment flange to fit the size of the hub: maximum stroke 1.340 mm





tracce.com



Magni Telescopic Handlers srl

Via Magellano, 22 - 41013 Castelfranco Emilia, Modena, Italia

Tel: +39 059 8630811 - Fax: +39 059 8638012

commerciale@magnith.com - www.magnith.com

The data in this brochure are informative and subject to change without notice