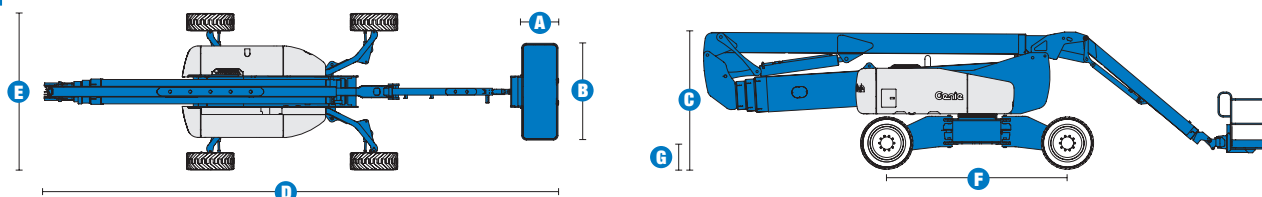


Specifications



MODEL Z™-135/70

MEASUREMENTS	US	Metric
Working height maximum*	141 ft	43.15 m
Platform height maximum	135 ft	41.15 m
Horizontal reach max - riser extended	59 ft 2 in	18.03 m
Horizontal reach max - riser retracted	69 ft 9 in	21.26 m
Up and over clearance maximum -		
riser extended	75 ft 6 in	23.01 m
riser retracted	32 ft 6 in	9.91 m
Below ground reach	19 ft 3 in	5.87 m
A Platform length - 8 ft / 6 ft model	3 ft / 2 ft 6 in	.91 m / .76 m
B Platform width - 8 ft / 6 ft model	8 ft / 6 ft	2.44 m / 1.83 m
C Height - stowed	10 ft 1 in	3.07 m
D Length - stowed	42 ft 5 in	12.93 m
E Width - axles extended	12 ft 11 in	3.94 m
Width - axles retracted	8 ft 1 in	2.46 m
F Wheelbase - axles extended	13 ft 6 in	4.11 m
Wheelbase - axles retracted	15 ft 6 in	4.72 m
G Ground clearance - center	1 ft 8 in	.51 m

PRODUCTIVITY

Lift capacity	600 lbs	272 kg
Platform rotation	160°	
Vertical jib rotation	110°	
Turntable rotation	360° continuous	
Turntable tailswing - axles extended riser up	2 ft 7 in	.79 m
Turntable tailswing - riser down	14 ft	4.27 m
Drive speed - stowed	3.0 mph	4.8 km/h
Drive speed - raised	0.68 mph	1.1 km/h
Lift speed to full height	96 sec	
Gradeability - stowed**	45%	
Inside turning radius - axles extended	7 ft 6 in	2.29 m
Inside turning radius - axles retracted	18 ft 1 in	5.51 m
Outside turning radius - axles extended	18 ft 6 in	5.64 m
Outside turning radius - axles retracted	25 ft 6 in	7.77 m
Controls	12 V DC proportional	
Tires	445/65 D22.5 18 ply foam-filled	

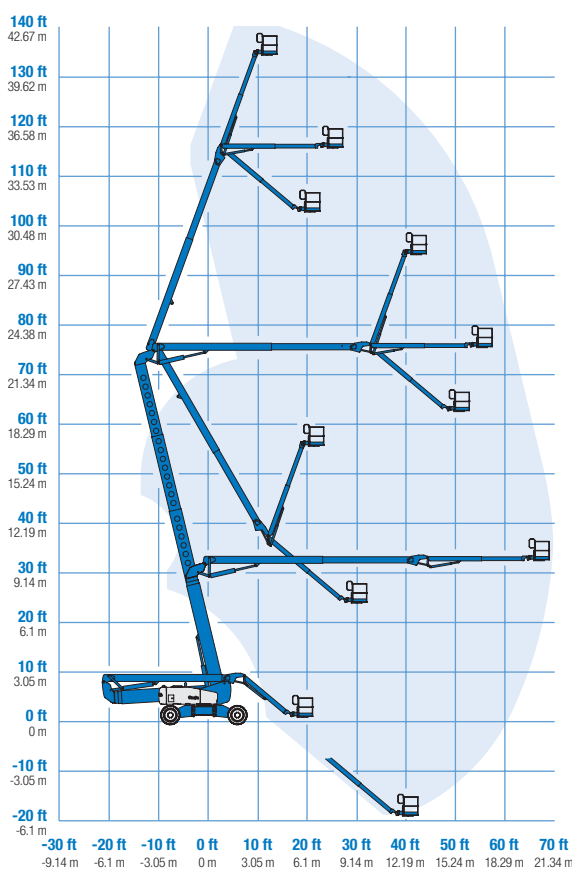
POWER

Power source	Deutz Diesel TD 2011 L04i 4-cylinder turbo diesel, 74 hp (55 kW) Perkins Diesel 804-33T 4-cylinder turbo diesel, 83 hp (62 kW) Cummins Diesel B3.3T 4-cylinder turbo diesel, 80 hp (59.8 kW)	
Auxiliary power unit	12 V DC	
Hydraulic tank capacity	65 gal	246.1 L
Fuel tank capacity	40 gal	151.4 L

WEIGHT***

44,900 lbs 20,366 kg

RANGE OF MOTION Z™-135/70



* The metric equivalent of working height adds 2 m to platform height. U.S. adds 6 ft to platform height.

** Gradeability applies to driving on slopes. See operator's manual for details regarding slope ratings.

*** Weight will vary depending on options and/or country standards.

Features

EASILY CONFIGURED TO MEET YOUR NEEDS

PLATFORM OPTIONS

- Steel 8 ft (2.44 m) (standard)
- Steel 6 ft (1.83 m)
- Steel 6 or 8 ft (1.83 or 2.44 m) tri-entry

JIB

- 12 to 20 ft (3.66 to 6.10 m) Jib-Extend™

POWER OPTIONS

- Deutz turbo diesel, 74 hp (55 kW)
- Perkins turbo diesel, 83 hp (62 kW)
- Cummins turbo diesel, 80 hp (59.8 kW)

DRIVE/STEER

- 4WD (standard)
- 4WS (standard)

TIRE

- Extra-wide rough terrain foam-filled (standard)



STANDARD FEATURES

MEASUREMENTS

- 141 ft (43.15 m) working height
- 69 ft 9 in (21.26 m) horizontal reach
- 75 ft 6 in (23.01 m) up and over clearance
- Up to 600 lb (272 kg) lift capacity

PRODUCTIVITY

- Xchassis™ extendable axles
- 12 to 20 ft (3.66 to 6.10 m) Jib-Extend™
- Self-leveling platform
- Hydraulic platform rotation
- Fully proportional Hall effect controls
- On-board full diagnostics and engine monitoring display
- ALC 1000 electronic control system
- Hydraulic oil cooler
- Drive enable
- AC power cord to platform
- Horn
- Hour meter
- Tilt alarm
- Descent, motion, & travel alarms
- 360° continuous turntable rotation
- Four wheel high angle steer
- Four steering modes: front, rear, crab and coordinated
- Four wheel brakes
- Full-time positive traction 4WD
- Adjustable foot switch timeout
- Two speed wheel motors
- Configurable controls to limit lift height to 91 ft (27.74 m)
- Engine status display

POWER

- All engines are emissions compliant
- 12 V DC auxiliary power
- Engine protection package
- Deutz intake air heater
- Swing out engine tray

OPTIONS & ACCESSORIES

PRODUCTIVITY

- Platform swing gate
- Half-mesh platform inserts with swing gate
- Platform top auxiliary rail
- Air line to platform
- Arc Pro 275™ Heavy-Duty Welder package
- Welder Ready package
- Weld leads to platform
- Fire resistant hydraulic oil
- Biodegradable hydraulic oil
- Basic hostile environment kit
- Deluxe hostile environment kit
- Thumb rocker steer
- Tool tray
- Fluorescent tube caddy
- Pipe cradle (pair)
- Flashing beacon
- Panel cradle package*
- Platform work lights
- Front driving lights
- Lockable platform control box covers

POWER

- AC generator packages (110V/60Hz, 3000W or 220V/50Hz, 2500W)
- Cold Weather Packages
- Arctic Packages
- Diesel scrubber muffler (Cummins)
- Diesel scrubber/spark arrestor muffler (Deutz and Perkins)
- Diesel spark arrestor muffler (Deutz and Perkins)

* Available on select models

Genie United States

18340 NE 76th Street
P.O. Box 97030
Redmond, Washington 98073-9730

Telephone **+1 (425) 881-1800**
Toll Free in USA/Canada **+1 (800) 536-1800**
Fax +1 (425) 883-3475

Genie Europe

Millennium House
Brunel Drive
Newark NG24 2DE
UK

Telephone **+44 (0)1476 584333**
Fax +44 (0)1476 584334

Email: infoeurope@genieind.com

Distributed By:



Effective Date: January, 2009. Product specifications and prices are subject to change without notice or obligation. The photographs and/or drawings in this document are for illustrative purposes only. Refer to the appropriate Operator's Manual for instructions on the proper use of this equipment. Failure to follow the appropriate Operator's Manual when using our equipment or to otherwise act irresponsibly may result in serious injury or death. The only warranty applicable to our equipment is the standard written warranty applicable to the particular product and sale and we make no other warranty, express or implied. Products and services listed may be trademarks, service marks or trade-names of Terex Corporation, Genie Industries, Inc. and/or their subsidiaries in the U.S.A. and many other countries and all rights are reserved. Terex is a Registered Trademark of Terex Corporation in the U.S.A. and many other countries. Genie is a Registered Trademark of Genie Industries, Inc. in the U.S.A. and many other countries. Genie is a Terex Company. © 2009 Terex Corporation.