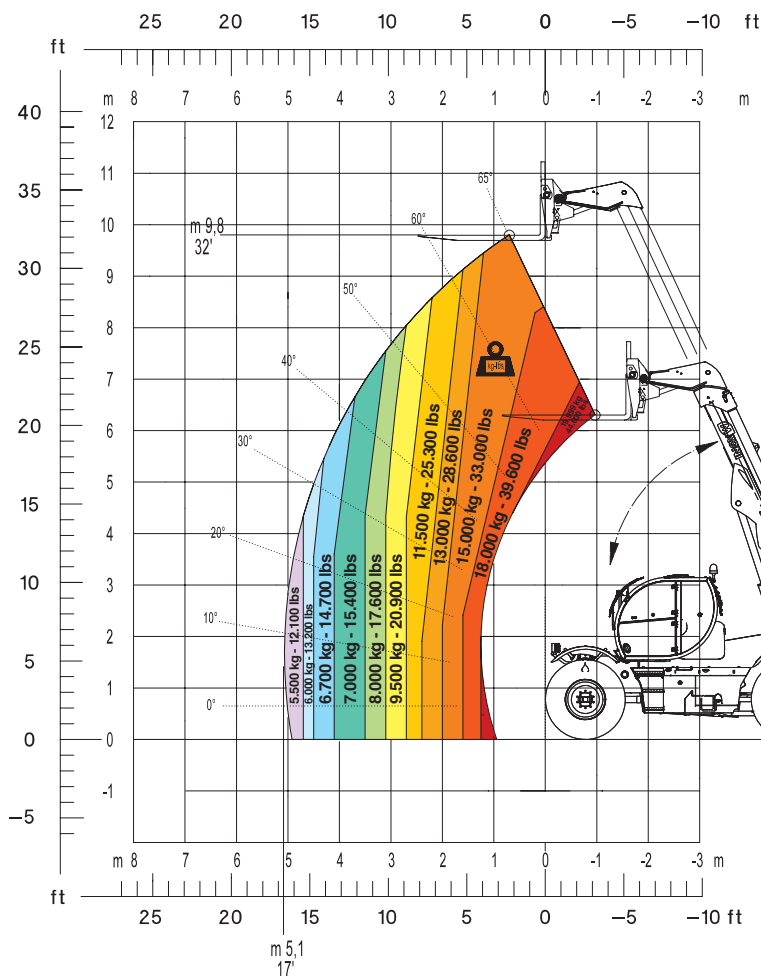




Load chart with forks



| | | | |
|--------------------------|---|---|---------------------------------|
| HTH20.10 | MACHINE MODEL | Telescopic handler | HTH 20.10 |
| | | Maximum lifting capacity | 19.999 Kg at 600 mm load center |
| | | Maximum lifting height | 10,4 m |
| | ENGINE | Type | Mercedes OM 934 LA Stage IV |
| | | Rated power | 129 kW - 175 HP at 2.200 rpm |
| | | Maximum torque | 750 Nm at 1.200-1.600 rpm |
| | | Displacement | 3,6 l |
| | | Cylinders | 4 cylinders / 5.130 cm3 |
| | TRANSMISSION | Type | Hydrostatic |
| | | Model | Bosch – Rexroth |
| Displacements | | Variable displacement pump electronically controlled. Variable displacement motor | |
| Gear box | | 2 speeds forward-reverse | |
| WEIGHTS | Total unladen | 20.500 kg | |
| | Front axle unladen (boom retracted and lowered) | 9.000 kg | |
| | Rear axle unladen (boom retracted and lowered) | 11.500 kg | |
| TANKS CAPACITIES | Fuel tank | 200 l | |
| | AdBlue | 40 l | |
| | Hydraulic oil tank | 210 l | |
| | Engine oil tank | 20,5 l | |
| | Cooling liquid | 25 l | |
| HYDRAULIC CIRCUIT | Max. operating system pressure | 350 bar | |
| | Circuit type | Load sensing | |

EAZI
ACCESS
086 100 3294
www.eazi.co.za
RENTAL | SALES | SERVICE | TRAINING

The data in this brochure are informative and subject to change without notice